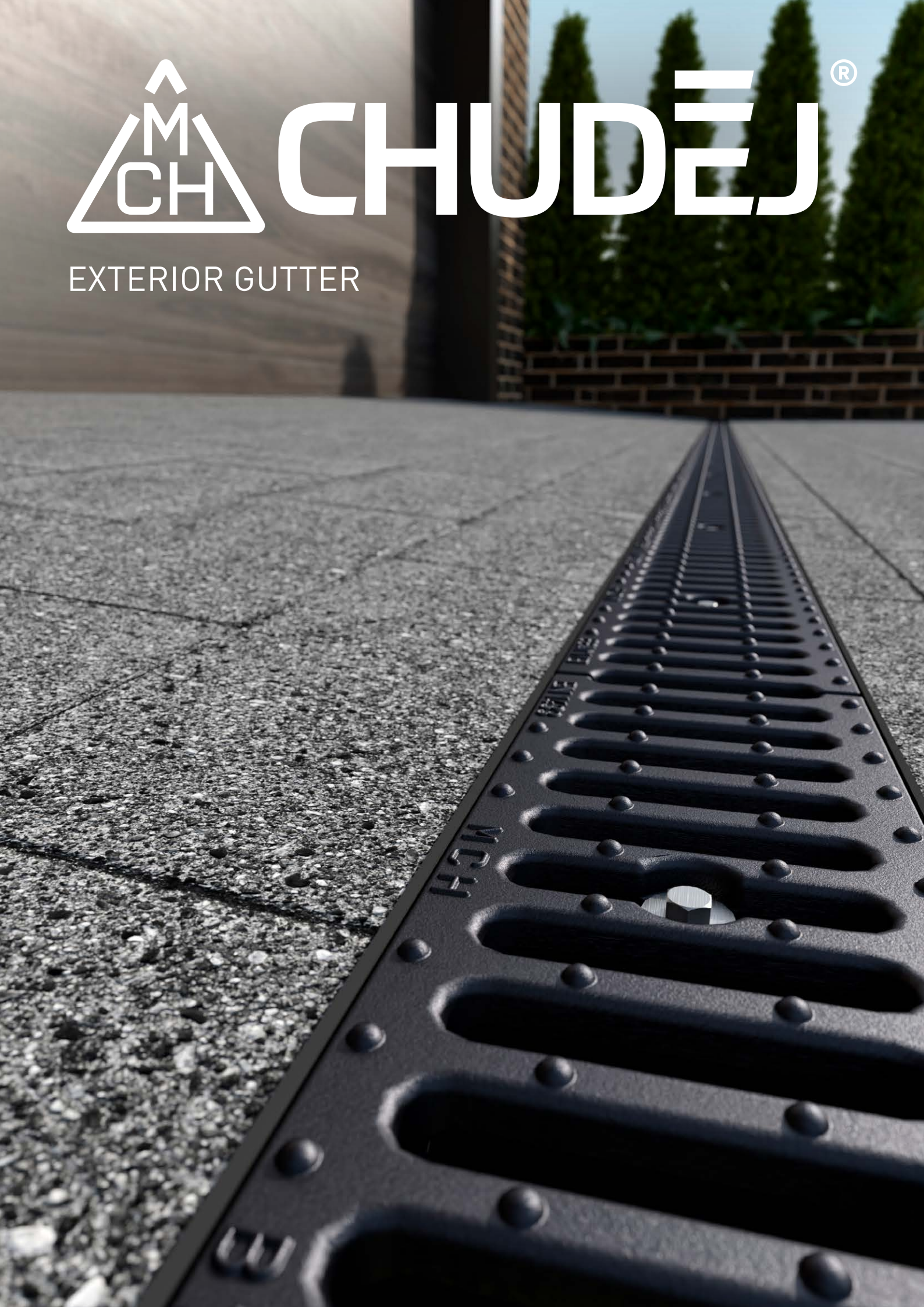




CHUDĚJ[®]

EXTERIOR GUTTER



EXTERIOR GUTTER

Exterior gutter with cast iron, zinc-plated and plastic grid are suitable for draining water from construction sites, areas used by pedestrians and cyclists, as well as for driveways, pathways, parking lots etc. All types of grids are secured with zinc-plated screw for a secure fit. Loading capacity B (testing force 125 kN). Made from PP, UV stabilized. Grid made of cast iron DIN 1691 load capacity compliant to EN 1433 - B 125 (12,500 kg). Zinc-plated and plastic grid load capacity compliant to EN 1433 - A 15 (1,500 kg)



CH 1111
Exterior gutter with cast iron grid

CH 1114
Exterior gutter with cast iron grid - lower



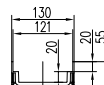
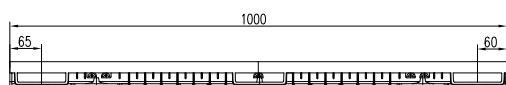
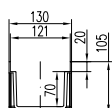
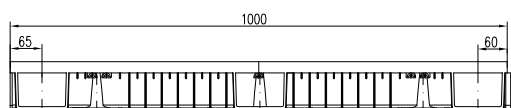
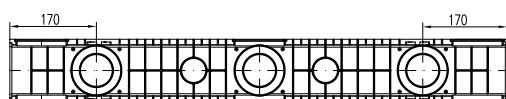
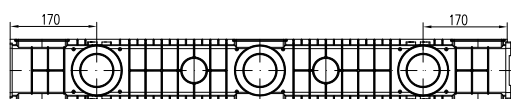
CH 1112
Exterior gutter with zinc-plated grid

CH 1115
Exterior gutter with zinc-plated grid - lower



CH 1113
Exterior gutter with plastic grid

CH 1116
Exterior gutter with plastic grid - lower



CH 1120
End piece of the exterior gutter



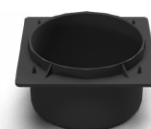
CH 1121
End piece of the lower exterior gutter



CH 1122
Side connecting D 110 of the exterior gutter



CH 1123
Side connecting D 75 of the lower exterior gutter



CH 1124
Bottom connecting D 110 of the exterior gutter